

Broadband Cell, Corporate Office  
211, Bharat Sanchar Bhavan, Janpath  
New Delhi: 110001  
Ph: 23734094 Fax: 23734284



भारत संचार निगम लिमिटेड  
(भारत सरकार का उपक्रम)  
**BHARAT SANCHAR NIGAM LIMITED**  
(A Govt. of India Enterprise)

No:64-03/09-BB(P-3)

Dt: 24-01-2011

To  
All CGMs Telecom Circles / Metro Districts

**Subject:** DELT & SELT to test broadband connection parameters.

**Ref:** U.O. No. 210-22/2009-MMD/ Vol II dated 09-12-2010

There are two tests, DELT & SELT which test the upstream & downstream parameters of the broadband connections. Steps for performing both the tests are enclosed as Annexure-I.

You are requested to instruct all nodal officers of your circle & SSAs to undertake DELT and SELT test before providing any broadband connection (specially the high speed broadband connections) and specifically in value added services on existing broadband connection, namely IPTV etc.

  
24/01/11  
(R SAJI KUMAR)  
Addl.GM (NWP-BB)

**Encl:** as above

Copy to:

1. Sr GM (NWP-BB), BSNL CO for information please.

**Endf.No. D2 / BMP/O&M /2009-2011 / 66 dated at Chennai-8 the 4. 2.2011**

**Endorsed and forwarded to all the Head of SSAs for information and necessary action please.**

*Signed*

Sub Divisional Engineer ( BB )  
Chennai - 600 008.

# Please go through steps for performing DELT & SELT

## DELT

1. Please disable the DSL port where we want to perform the test
2. Log on to DSLAM EMS (Netman 4000)
3. Double click on the corresponding NE in EMS
4. Select Diagnostics Tab .
5. Select Node > shelf 1 > slot 1 > then DELT
6. Select required port then start .

*R/bir, SELT/DELT tests were conducted yesterday with EMS of DSLAM. Sample results are enclosed. Further action is being planned. Submitted pl.*

*Can they be submitted to call*

*IP DSLAM 3.7.3 bgl dlm bge4u 01 (10.224.0.33)*

Configuration Batch Profile Video Service

Node  
Shelf 1  
Slot 1: IPADSL8A  
F4/F5 loopback  
DELT  
Slot 2: IPADSL8A  
Slot 3: IPADSL8A  
Slot 4: IPADSL8A  
Slot 5: IPADSL8A  
Slot 6: IPADSL8A  
Slot 7: IPADSL8A  
Slot 8: IPADSL8A  
Slot 9: IPADSL8A

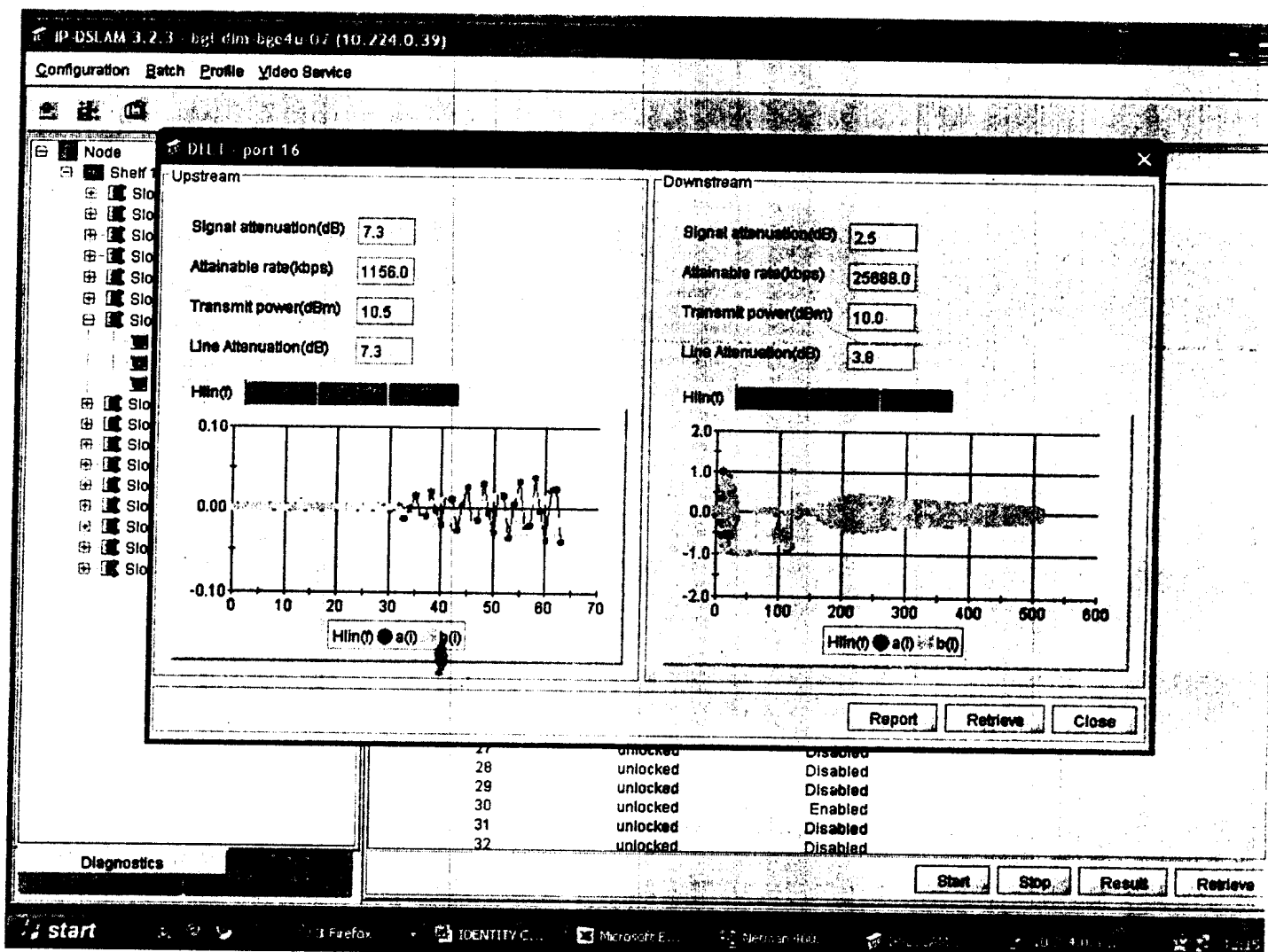
Port	Admin Status	Operational Status	DELT Progress
1	unlocked	Disabled	
2	unlocked	Enabled	
3	unlocked	Disabled	
4	unlocked	Disabled	
5	unlocked	Disabled	
6	unlocked	Disabled	
7	unlocked	Disabled	
8	unlocked	Disabled	
9	unlocked	Disabled	
10	unlocked	Disabled	
11	unlocked	Disabled	
12	unlocked	Disabled	
13	unlocked	Disabled	
14	unlocked	Disabled	
15	unlocked	Disabled	
16	unlocked	Disabled	
17	unlocked	Disabled	
18	unlocked	Disabled	
19	unlocked	Disabled	
20	unlocked	Disabled	
21	unlocked	Disabled	
22	unlocked	Disabled	
23	unlocked	Enabled	
24	unlocked	Disabled	
25	unlocked	Disabled	
26	unlocked	Disabled	
27	unlocked	Disabled	
28	unlocked	Enabled	
29	unlocked	Disabled	
30	unlocked	Disabled	
31	unlocked	Disabled	
32	unlocked	Disabled	

Start Stop Result Review

*Handwritten notes: Bir (CFA), Yes Sir, 02/14/11, PE take dict, 02/18, Or AS*

7. Now select adsl2plus and click OK. Now the test will progress

8. Just click on result tab the result will be generated as shown below



## SELT

1. Disable the port where we want to perform the test
2. Remove the modem from line
3. Log on to DSLAM EMS
4. Double click the NE

5. Select the Diagnostics tab

6. Select Node>shelf1>slot>port>then SELT

7. Select the required port and give test

IP DSLAM 1.2.3 - http://10.224.0.33

Configuration Batch Profile Video Service

Node

- Shelf 1
  - Slot 1: IPADSL8A
    - F4/F5 loopback
    - DELT
    - SELT
  - Slot 2: IPADSL8A
  - Slot 3: IPADSL8A
  - Slot 4: IPADSL8A
  - Slot 5: IPADSL8A
  - Slot 6: IPADSL8A
  - Slot 7: IPADSL8A
  - Slot 8: IPADSL8A
  - Slot 9: IPADSL8A

SELT

Port	Admin Status	Operational Status
1	unlocked	Disabled
2	unlocked	Enabled
3	unlocked	Disabled
4	unlocked	Disabled
5	unlocked	Disabled
6	unlocked	Disabled
7	unlocked	Disabled
8	unlocked	Disabled
9	unlocked	Disabled
10	unlocked	Disabled
11	unlocked	Disabled
12	unlocked	Disabled
13	unlocked	Disabled
14	unlocked	Disabled
15	unlocked	Disabled
16	unlocked	Disabled
17	unlocked	Disabled
18	unlocked	Disabled
19	unlocked	Enabled
20	unlocked	Disabled
21	unlocked	Disabled
22	unlocked	Disabled
23	unlocked	Enabled
24	unlocked	Disabled
25	unlocked	Disabled
26	unlocked	Disabled
27	unlocked	Disabled
28	unlocked	Enabled
29	unlocked	Disabled
30	unlocked	Disabled
31	unlocked	Disabled
32	unlocked	Disabled

Diagnostics

Test Retrieve

start

7. The result will be generated automatically as shown below with in 10 minutes..

IP DSL AAA 3.2.3 bgl dlm 1-gate 07 (10.224.0.39)

Configuration Single End Loop Test

Loop Type  
 Cable Type: awg26 Noise Type: AWGN Region: Rest of The World

Test Parameters

Loop Length (m):	238	Round Trip Delay (ns):	45	Round Trip Error:	8
FIR Error:	140	Attenuation 300 (dB):	3	Attenuation 150 (dB):	1
Termination Phase (degree):	40	Downstream Rate Capability (kbps):	28800	Upstream Rate Capability (kbps):	1500
Downstream Tones:	480	Upstream Tones:	26	Downstream Margin (dB):	6
Upstream Margin (dB):	6				

Test Summary

Port ID: 18 Test Status: Set Test Done Test Result: Valid

Detail Report

MAG

Tone

Start Result Close Retire

Diagno

start

4/4